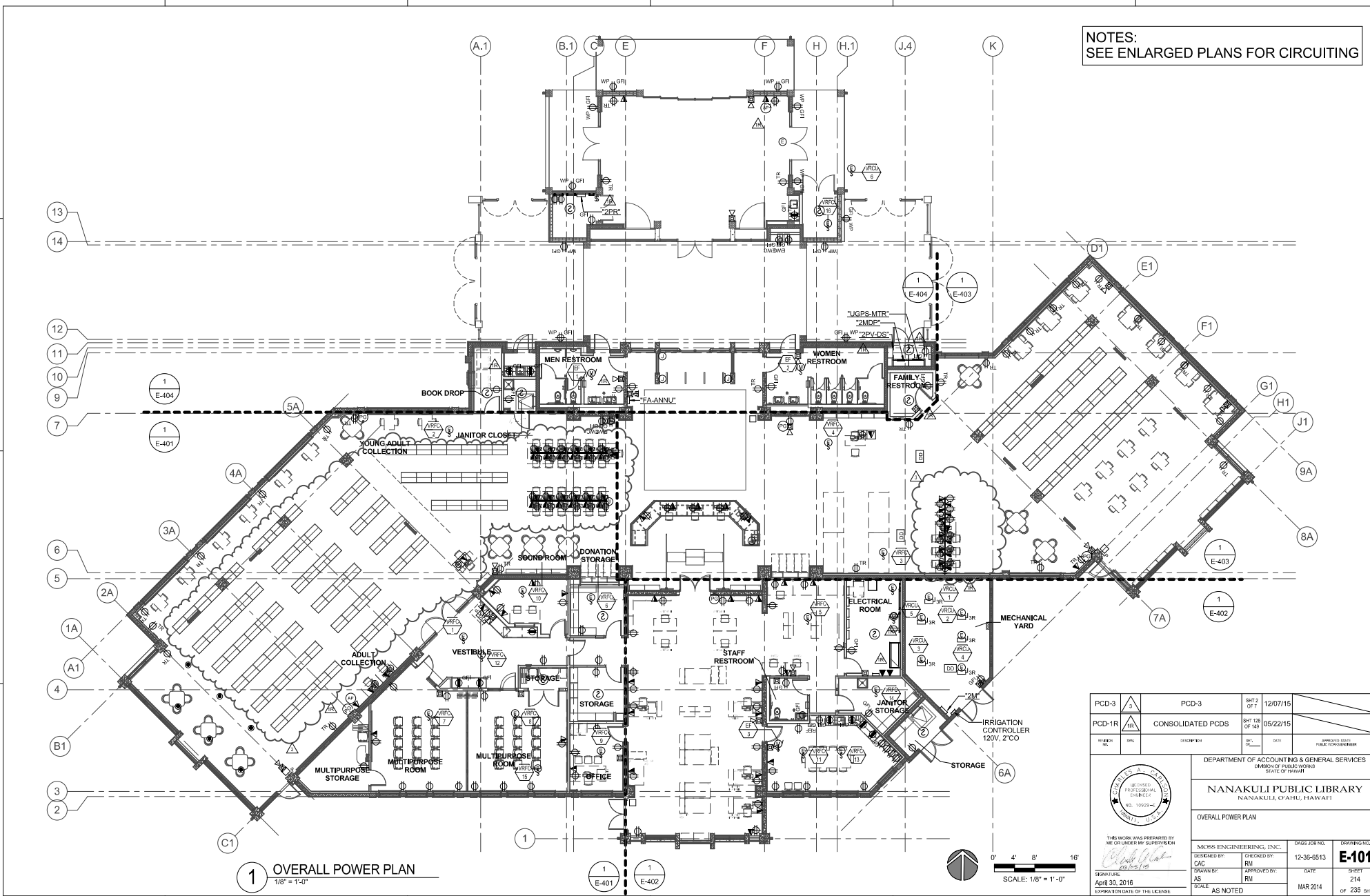


EXHIBIT D


ELECTRICAL PLANS FOR THE NANAKULI LIBRARY

For detailed drawings of the existing Sound Room, please refer to pages E-101, E-104, and E-401. The room is labeled as "Sound Room."

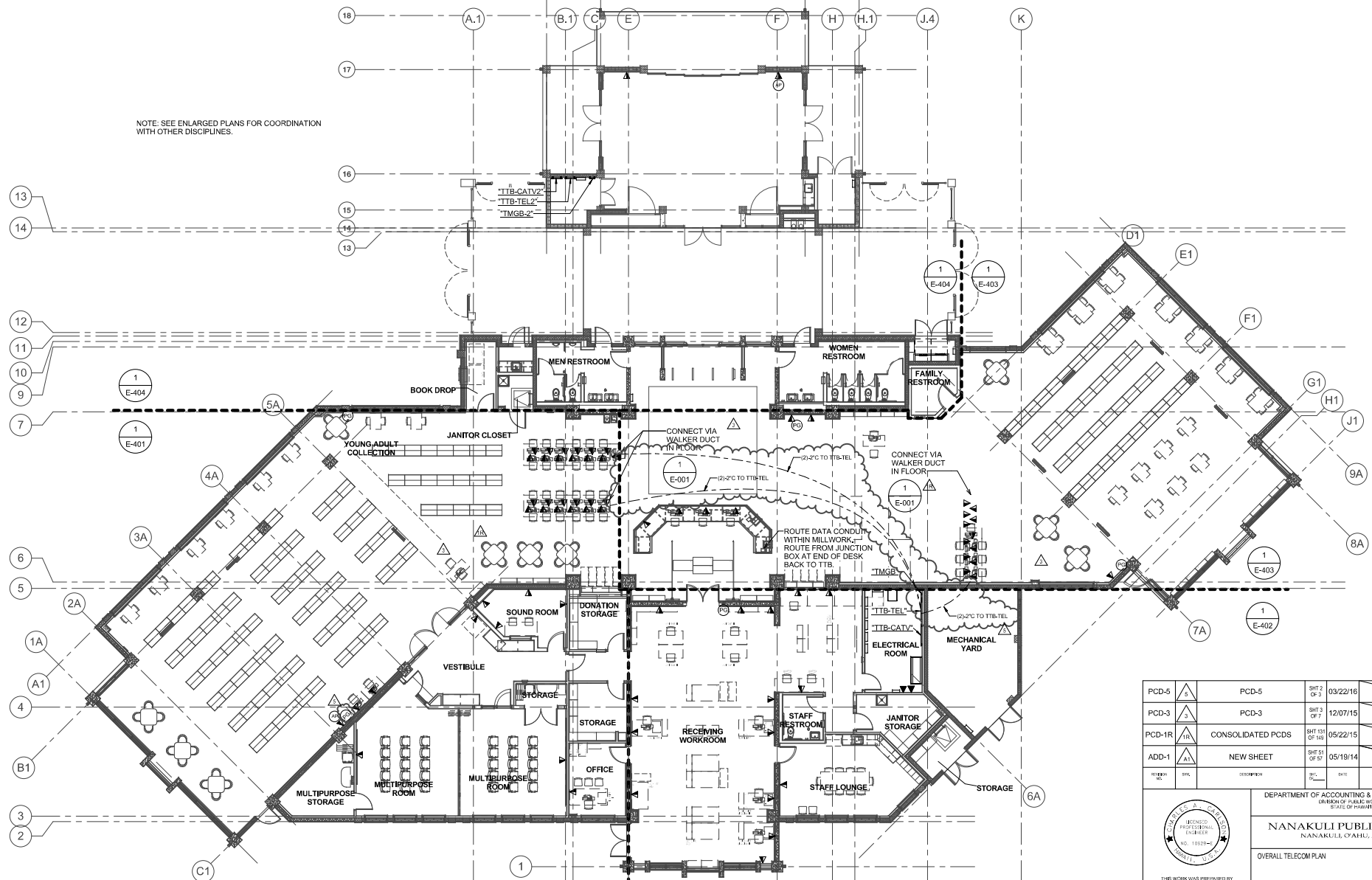
NOTES:
 SEE ENLARGED PLANS FOR CIRCUITING



1 OVERALL POWER PLAN
 1/8" = 1'-0"

PCD-3	3	PCD-3	SHT 2 OF 7	12/07/15
PCD-1R	1R	CONSOLIDATED PCDs	SHT 128 OF 149	05/22/15
REVISION NO.	DESCRPTION	DATE	DRAWN BY: PUBLIC WORKS EXPRESS	
DEPARTMENT OF ACCOUNTING & GENERAL SERVICES DIVISION OF PUBLIC WORKS STATE OF HAWAII				
NANAKULI PUBLIC LIBRARY NANAKULI, OAHU, HAWAII				
OVERALL POWER PLAN				
THIS WORK WAS PREPARED BY ME OR UNDER MY SUPERVISION 		DRAFTS JOB NO. 12-36-0513	DRAWING NO. E-101	
DESIGNED BY: CAC	CHECKED BY: RM	DATE: MAR 2014	SHEET: 214	
DRAWN BY: AS	APPROVED BY: RM	DATE: MAR 2014	SHEET: 214	
SCALE: AS NOTED		CF 235 SHTS		

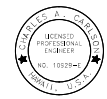
NOTE: SEE ENLARGED PLANS FOR COORDINATION WITH OTHER DISCIPLINES.



1 OVERALL TELECOM PLAN
 1/8" = 1'-0"

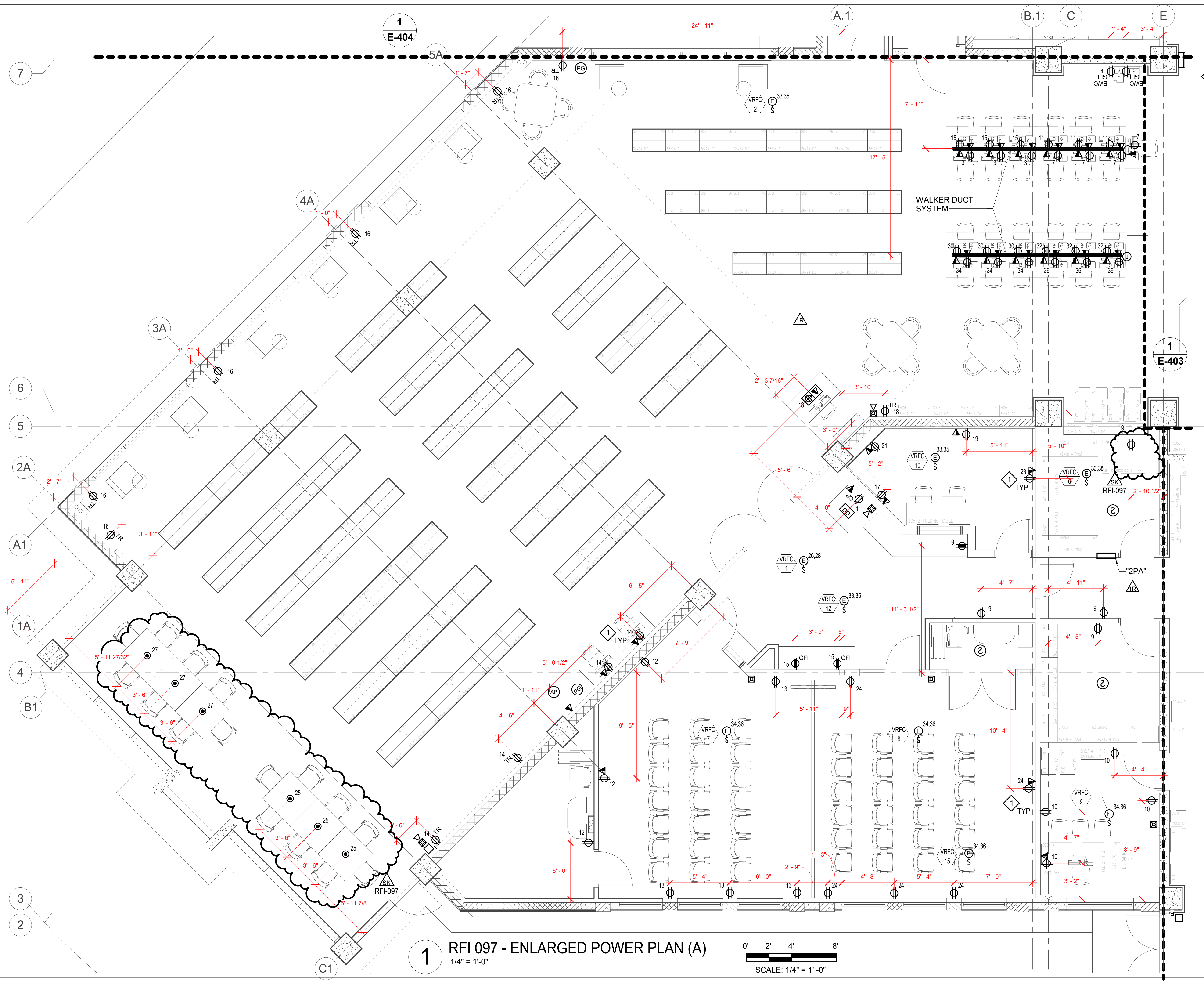
0' 4' 8' 16'
 SCALE: 1/8" = 1'-0"

PCD-5	PCD-5	SH2 OF 2	03/22/16
PCD-3	PCD-3	SH3 OF 3	12/07/15
PCD-1R	CONSOLIDATED PCDs	SH131 OF 148	05/22/15
ADD-1	NEW SHEET	SH51 OF 52	05/19/14



DEPARTMENT OF ACCOUNTING & GENERAL SERVICES
 DIVISION OF PUBLIC WORKS
 STATE OF HAWAII
NANAKULI PUBLIC LIBRARY
 NANAKULI, OAHU, HAWAII

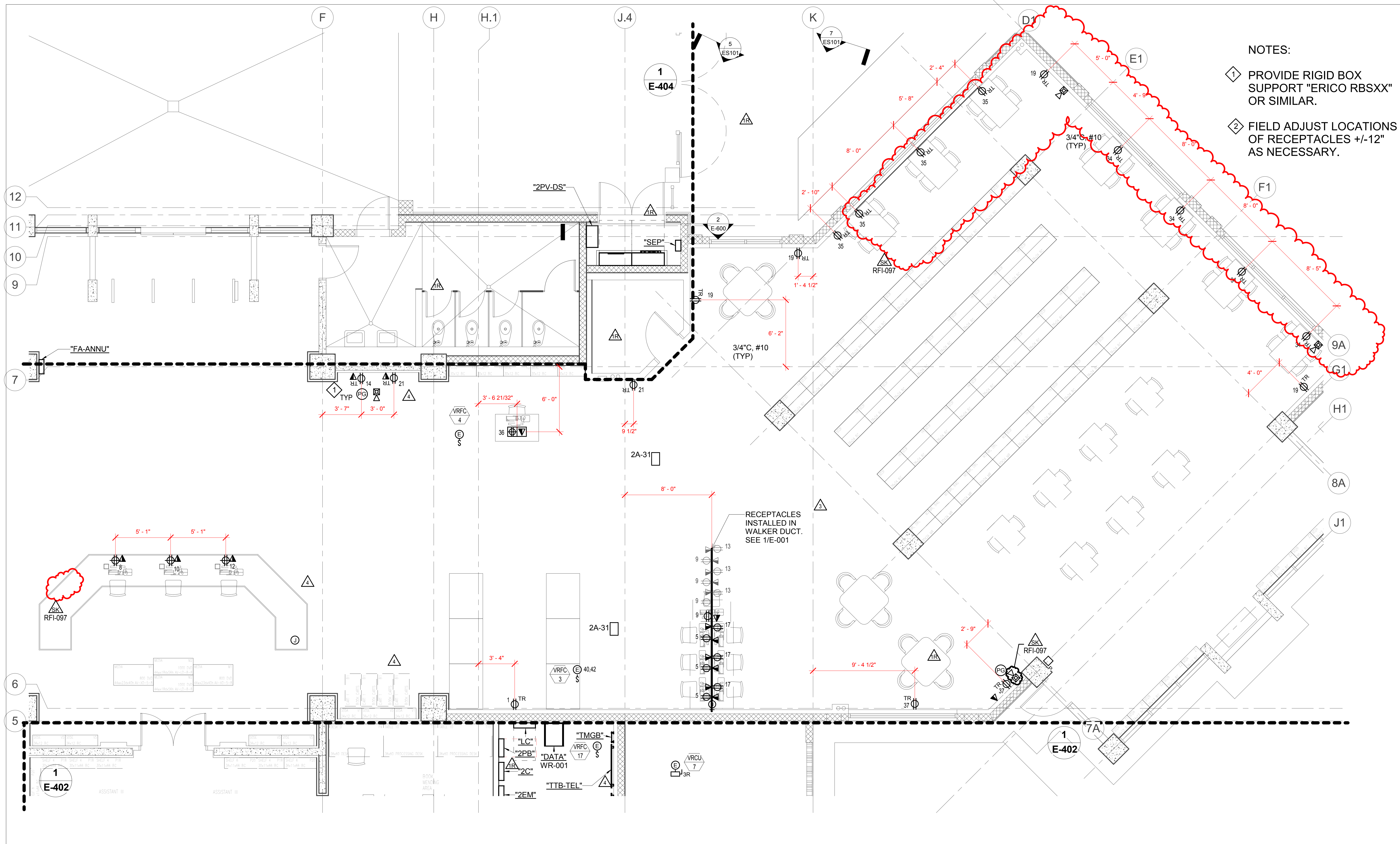
OVERALL TELECOM PLAN		DWG JOB NO.	DRAWING NO.
MICROS ENGINEERING, INC.		12-36-6513	E-104
DESIGNED BY: CAC	CHECKED BY: CAC	DATE	SHEET
DRAWN BY: AS	APPROVED BY: CAC	MAR 2014	218A
SIGNATURE: April 30, 2016	SCALE: AS NOTED	OF 235 SHEETS	



- NOTES:
- ① PROVIDE RIGID BOX SUPPORT "ERICO RBSXX" OR SIMILAR.
 - ② FIELD ADJUST LOCATIONS OF RECEPTACLES +/-12" AS NECESSARY.

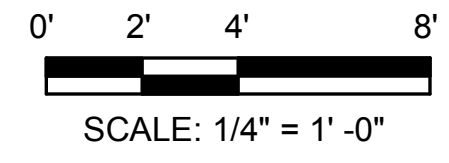
1 RFI 097 - ENLARGED POWER PLAN (A)
 1/4" = 1'-0"





- NOTES:
- 1 PROVIDE RIGID BOX SUPPORT "ERICO RBSXX" OR SIMILAR.
 - 2 FIELD ADJUST LOCATIONS OF RECEPTACLES +/-12" AS NECESSARY.

1 RFI 097 - ENLARGED POWER PLAN (C)
1/4" = 1'-0"

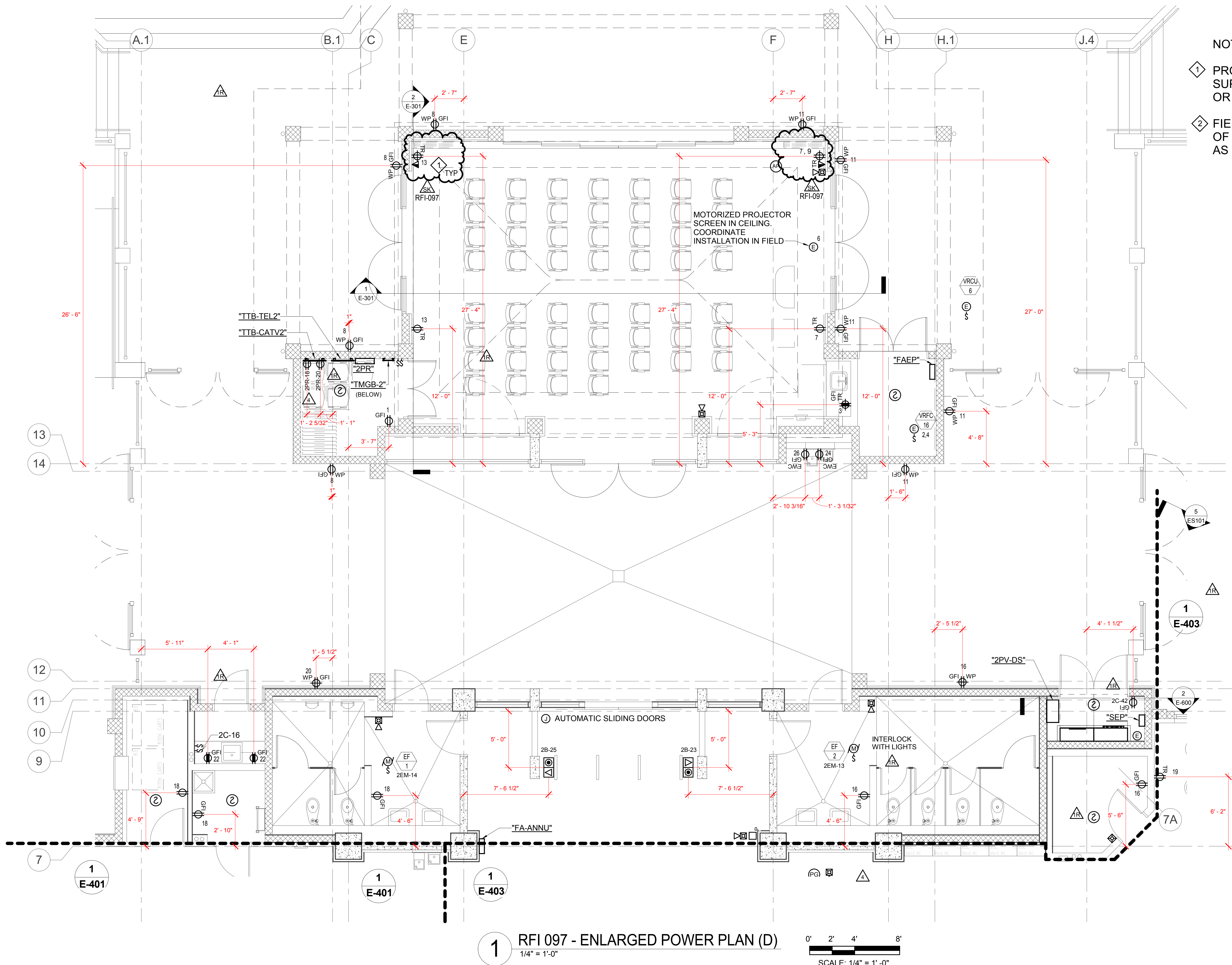


Date 07/13/16

Job No. 12-36-6513 Reference Drawing No. E-403 Sheet No. SKE-31

CDS INTERNATIONAL

1001 Bishop Street, Suite 400, Honolulu, HI 96813-3499
Telephone: (808) 524-4200 FAX: (808) 521-3766



- NOTES:
- ① PROVIDE RIGID BOX SUPPORT "ERICO RBSXX" OR SIMILAR.
 - ② FIELD ADJUST LOCATIONS OF RECEPTACLES +/-12" AS NECESSARY.

1 RFI 097 - ENLARGED POWER PLAN (D)
 1/4" = 1'-0"
 SCALE: 1/4" = 1'-0"

Date 07/13/16

Job No. 12-36-6513 Reference Drawing No. E-404 Sheet No. SKE-32

CDS INTERNATIONAL
 1001 Bishop Street, Puaahi Tower Suite 400, Honolulu, HI 96813-3499
 Telephone: (808) 524-4200 FAX: (808) 521-3766

C:\Users\jim\Documents\NPL_ELEC_PCD1_Central(2017)_Derrick\Jim.rvt

ELECTRICAL SYMBOL LIST (NOT ALL MAY BE USED)

- RACEWAY AND CONDUCTORS EXPOSED
- _____ RACEWAY AND CONDUCTORS CONCEALED IN WALL OR ABOVE CEILING
- - - - - RACEWAY AND CONDUCTORS BELOW FLOOR OR GRADE
- RACEWAY AND CONDUCTORS DOWN
- RACEWAY AND CONDUCTORS UP
- ~~~~~ FLEXIBLE RACEWAY AND CONDUCTORS
- HOMERUN TO PANEL, AND CIRCUIT. NUMBER OF ARROWS EQUAL NUMBER OF CIRCUITS. #12 CONDUCTOR UNLESS OTHERWISE NOTED.
- A - 1,3 → HOMERUN TO PANEL "A", CIRCUITS 1 & 3
- ⊖ INDICATES INSULATED GREEN GROUND CONDUCTOR IN RACEWAY
- ≡ RACEWAY WITH NUMBER OF CONDUCTORS SHOWN (3)

POWER & SIGNAL

- PANELBOARD
- ⊕ JUNCTION BOX
- ⊙ JUNCTION BOX, FLOOR MOUNTED
- ⊕ DUPLEX RECEPTACLE, 20 AMP, 125 VOLT, 3 WIRE, +18" OR AS NOTED
- ⊕ DUPLEX RECEPTACLE, 20 AMP, 125 VOLT, 3 WIRE, MOUNTED 6" ABOVE COUNTER OR AS NOTED
- ⊕ DOUBLE DUPLEX RECEPTACLE, 20 AMP, 125 VOLT, 3 WIRE, +18" OR AS NOTED
- ⊕ POWER RECEPTACLE, "NEMA" TYPE AND RATING AS INDICATED, +18" OR AS NOTED
- ⊕ FLUSH FLOOR MOUNTED POWER RECEPTACLE, 20 AMP, 125 VOLT, 3 WIRE. HUBBELL B2529 FLOOR BOX, S3925 BRASS COVER
- ⊕ EQUIPMENT CONNECTION
- ⊕ MOTOR CONNECTION

TELECOM

- WALL MOUNTED DATA RACK. FURNISHED BY OTHERS, INSTALLED BY CONTRACTOR.
- ⊕ CATV OUTLET, +18" AFF OR AS NOTED. PROVIDE RACEWAY FOR DATA ONLY, NO CABLING. 1" CO TO ACCESSIBLE CEILING OR TO TELECOM BACKBOARD
- ▽ DATA OUTLET, +18" AFF OR AS NOTED. PROVIDE RACEWAY ONLY, NO CABLING. 1" CO TO ACCESSIBLE CEILING OR TO TELECOM BACKBOARD
- ▽ TEL OUTLET, +18" AFF OR AS NOTED. PROVIDE RACEWAY ONLY, NO CABLING. 1" CO TO ACCESSIBLE CEILING OR TO TELECOM BACKBOARD
- ▽ TEL/DATA OUTLET, +18" AFF OR AS NOTED. PROVIDE RACEWAY ONLY, NO CABLING. 1" CO TO ACCESSIBLE CEILING OR TO TELECOM BACKBOARD
- ▽ TEL/DATA OUTLET, +6" ABOVE COUNTER OR AS NOTED. PROVIDE RACEWAY ONLY, NO CABLING. 1" CO TO ACCESSIBLE CEILING OR TO TELECOM BACKBOARD
- ⊕ DUAL FLUSH FLOOR MOUNTED POWER & TEL/DATA RECEPTACLE, 20 AMP, 125 VOLT, 3 WIRE. PROVIDE RACEWAY FOR DATA ONLY, NO CABLING.
- ⊕ MULTI-GANG FLOOR BOX, POWER AND DATA, 20 AMP, 125 VOLT, 3 WIRE. PROVIDE RACEWAY FOR DATA ONLY, NO CABLING.
- ⊕ CONSOLIDATION POINT
- ⊕ WIRELESS ACCESS POINT
- ⊕ PA PAGING SPEAKER, WALL MOUNTED. BOGEN WBS8T725BRV WITH TERMINAL STRIP AND VOLUME CONTROL, OR EQUAL.

LIGHTING SEE LUMINAIRE SCHEDULE (E-002)

- FLUORESCENT LUMINAIRE, STRIP TYPE
- RECESSED DOWNLIGHT
- ⊕ RECESSED WALL WASHER
- ⊕ SURFACE LUMINAIRE
- ⊕ WALL MOUNTED SCONCE
- ⊕ EXIT LUMINAIRE, SURFACE/WALL MOUNTED. SHADED FACES INDICATE NUMBER OF SIDES. ARROW(S) INDICATE DIRECTION
- ▭ 1X4 FLUORESCENT TROFFER LUMINAIRE, DIRECT/INDIRECT TYPE.
- ▭ 2X4 FLUORESCENT TROFFER LUMINAIRE, DIRECT/INDIRECT TYPE.
- ▭ 2X4 FLUORESCENT TROFFER LUMINAIRE, DIRECT/INDIRECT TYPE. SHADING INDICATES FIXTURE CONNECTED TO EM INVERTER OR SELF CONTAINED BATTERY PACK.
- ⊕ LINEAR FLUORESCENT STRIP, CANTILEVER MOUNT
- ⊕ LINEAR FLUORESCENT STRIP, WALL MOUNT
- ⊕ LINEAR FLUORESCENT STRIP, ESCUTCHEON MOUNT ON TOP OF SHELVING

LIGHTING CONTROL

- ⊕ SINGLE POLE SWITCH, 20 AMP, 1 POLE, +46" OR AS NOTED. SUBSCRIPT "a" DESIGNATES LUMINAIRE/OUTLETS CONTROLLED BY SWITCH "a"
- ⊕ SWITCH, 20 AMP, 1 POLE, +46" OR AS NOTED
- 2 = 2 POLE
- 3 = 3 WAY
- 4 = 4 WAY
- F = FAN
- ⊕ CEILING MOUNTED MOTION SENSOR
- ⊕ WALL MOUNTED MOTION SENSOR, +46" AFF OR AS NOTED
- ⊕ LIGHTING CONTROL WALL STATION, +46" AFF OR AS NOTED.
- ⊕ PHOTOCELL

REFERENCE

- 1 A101 DETAIL INDICATOR: TOP HALF: DETAIL NUMBER
BOTTOM HALF: SHEET NUMBER
- 1 NOTE REFERENCE: "SEE PLAN NOTE "1" THIS SHEET"

ABC LUMINAIRE DESIGNATION. REFER TO LUMINAIRE SCHEDULE

ABBREVIATIONS

- C CONDUIT
- DP DISPOSAL
- DW DISHWASHER
- EL EVENING LIGHT, TIMESWITCH CONTROLLED
- EM EMERGENCY
- GFCI GROUND FAULT CIRCUIT INTERRUPTER
- IG INSULATED GROUND CIRCUIT(S)
- MW MICROWAVE
- NL NIGHT LIGHT, TIMESWITCH CONTROLLED
- REF REFRIGERATOR
- TR TAMPER RESISTANT
- TS TIMESWITCH AND/OR CONTACTOR CONTROLLED
- WP WEATHERPROOF

PANEL SCHEDULE ABBREVIATIONS

- AF ARC FAULT BREAKER
- GFI GROUND FAULT CIRCUIT BREAKER
- HA HACR BREAKER
- L LIGHT(S)
- LK LOCKABLE BREAKER
- PFB PROVISIONS FOR BREAKER
- R RECEPTACLE(S)
- S SPARE BREAKER

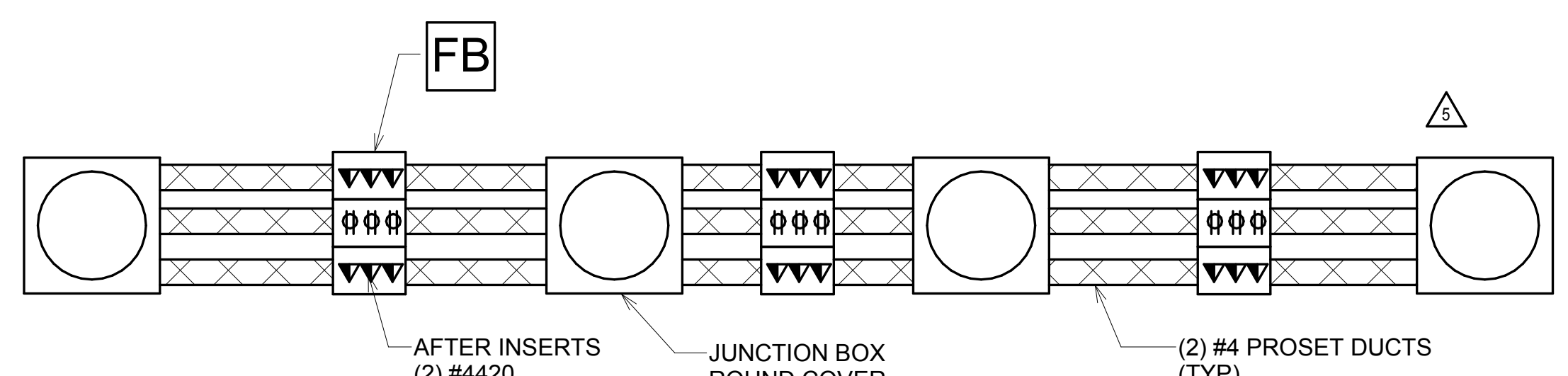
FIRE ALARM (SYMBOLS PER NFPA 170)

- ⊕ SMOKE DETECTOR, PHOTOELECTRIC TYPE, CEILING MOUNTED
- ⊕ FIRE ALARM HORN STROBE, +7-6" OR AS NOTED
- ⊕ FIRE ALARM STROBE, +7-6" OR AS NOTED
- ⊕ MANUAL PULL STATION, +4'-0"
- ⊕ FACFP FIRE ALARM CONTROL PANEL
- ⊕ DDD DUCT SMOKE DETECTOR, 120V
- ⊕ FSD FIRE SMOKE DAMPER, 120V

GENERAL NOTES:

1. SWITCHGEAR EQUIPMENT SPACES SIZED BASED ON SQUARE D EQUIPMENT.
2. EMERGENCY SYSTEM INVERTER BASED ON EMERG-POWER SYSTEMS OR EQUAL.
3. ALL CIRCUITS TO HAVE SEPARATE NEUTRALS. (NEC 210.4)
4. ALL RACEWAYS TO HAVE INSULATED GROUND CONDUCTOR.
5. MC CABLE ALLOWED: BOOK SHELVES, COLUMNS, LIGHTING.
6. DEVICES SHOWN ON PLAN MAY BE RELOCATED WITHIN 10 FEET OF LOCATION IN FIELD, PRIOR TO INSTALLATION.
7. SEE E-601 FOR FIRE ALARM INSTALLATION NOTES.
8. PROPOSED PHOTOVOLTAIC SYSTEM WOULD PROVIDE ALTERNATE ENERGY TO ALL BUILDINGS TO REDUCT UTILITY ENERGY CHARGES.

ELECTRICAL SHEET LIST	
SHEET NO	SHEET NAME
ES103	SITE PLAN - PHOTOMETRIC PLAN
E-001	SYMBOL LIST, NOTES
E-002	LUMINAIRE SCHEDULE
E-003	LUMINAIRE SCHEDULE - ALTERNATES
ES100	SITE PLAN - ELECTRICAL
ES100.1	SITE PLAN - ELECTRICAL - BASE BID
ES101	SITE ELECTRICAL - DETAILS
ES102	SITE OUTDOOR LAWN AREA - ELECTRICAL
E-101	OVERALL POWER PLAN
E-101.1	OVERALL POWER PLAN - BASE BID
E-102	OVERALL LIGHTING PLAN
E-102.1	OVERALL LIGHTING PLAN - BASE BID
E-103	ROOF PLAN - ELECTRICAL
E-104	OVERALL TELECOM PLAN
E-104.1	OVERALL TELECOM PLAN - BASE BID
E-105	OVERALL FIRE ALARM PLAN
E-105.1	OVERALL FIRE ALARM - BASE BID
E-111	UPPER LEVEL - LIGHTING PLAN
E-301	PROGRAM ROOM - SECTIONS
E-401	ENLARGED POWER PLAN (A)
E-402	ENLARGED POWER PLAN (B)
E-403	ENLARGED POWER PLAN (C)
E-404	ENLARGED POWER PLAN (D)
E-411	ENLARGED REFLECTED CEILING PLAN (A)
E-412	ENLARGED REFLECTED CEILING PLAN (B)
E-413	ENLARGED REFLECTED CEILING PLAN (C)
E-414	ENLARGED REFLECTED CEILING PLAN (D)
E-600	ONE LINE DIAGRAM
E-601	ONE LINE DIAGRAM - PROGRAM ROOM
E-602	TELECOM / CATV / FIRE ALARM RISER DIAGRAM
E-603	UTILITY NOTES
E-701	PANEL SCHEDULES
E-702	PANEL SCHEDULES
E-703	PANEL SCHEDULES
E-710	LIGHTING CONTROL SCHEDULE



NOTES

1. ALL ITEMS SHOWN ARE WALKER DUCT. COORDINATE LOCATION OF AFTERSSET INSERTS WITH FINAL FURNITURE LOCATION SHOP DRAWINGS.
2. THE DUCT CAN BE USED FOR OTHER CIRCUITS FOR LIGHTING AND POWER. SEE ELECTRICAL PLANS FOR LOCATION AND QUANTITIES

1 WALKER DUCT FLOOR BOX DETAIL
NTS

CITY AND COUNTY OF HONOLULU
REVISED ORDINANCE CHAPTER 32,
HONOLULU COUNTY CODE 1990, AS AMENDED

To the best of my knowledge, this project's design substantially conforms to the Building Energy Conservation Code For:

Building Component Systems
X Electrical Component Systems
Mechanical Component Systems

Signature: _____ Date: _____

Name: Charles A. Carlson

Title: Electrical Engineer

License No.: 10929-E

PCD-5	5	PCD-5	SHT 1 OF 3	03/22/16	
PCD-1R	1R	CONSOLIDATED PCDS	SHT 119 OF 149	05/22/15	
ADD-1	A1	REVISED SHEET LIST	SHT 50 OF 57	05/19/14	
REVISION NO.	SYM.	DESCRIPTION	SHT OF	DATE	APPROVED STATE PUBLIC WORKS ENGINEER

DEPARTMENT OF ACCOUNTING & GENERAL SERVICES
DIVISION OF PUBLIC WORKS
STATE OF HAWAII

NANAKULI PUBLIC LIBRARY
NANAKULI, OAHU, HAWAII

SYMBOL LIST, NOTES

MOSE ENGINEERING, INC.

DESIGNED BY: CAC
DRAWN BY: AS
SCALE: AS NOTED

CHECKED BY: RM
APPROVED BY: RM

DAGS JOB NO. 12-36-6513
DATE MAR 2014

DRAWING NO. **E-001**
SHEET 207
o 235 SHTS

THIS WORK WAS PREPARED BY ME OR UNDER MY SUPERVISION
Charles A. Carlson
APR 30 2016
EXPIRATION DATE OF THE LICENSE